

PRE-CRUSHERS

645XHD & APC Series



- ▶ *Wastequip Pre-crushers offer extreme crushing power, ranging from 70,000 to 141,000 pounds maximum force, making them some of the most powerful in the industry*
- ▶ *Waste is pre-crushed in a steel chamber to achieve greater density versus standard compactors*
- ▶ *Pre-crushers provide up to 150% greater crushing power than standard compactors*

IDEAL FOR



Wood Pallets



Metal Drums



Appliances



Furniture



Product Destruction

EXTRA HEAVY DUTY MODELS



645XHD-PC
Shown with optional side fed hopper
and vented weather cover

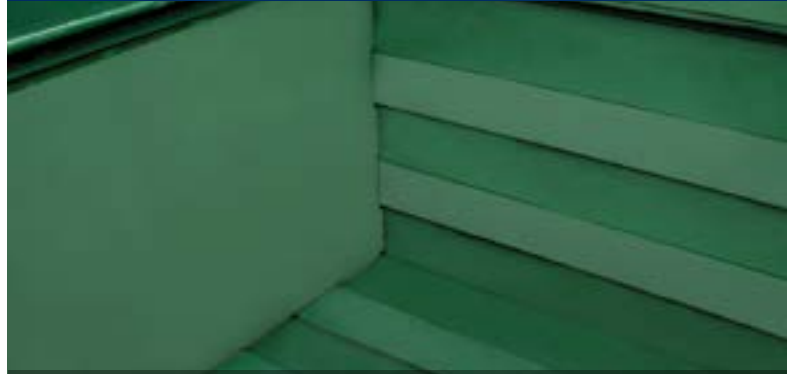
SPECIFICATIONS		645XHD-PC	645XHD-7-PC20	645XHD-7-PC30
CHARGE BOX	Wastequip rating:	6.00 cubic yards		
	Wastec rating	4.12 cubic yards		
	Clear top opening	60" length x 97.50" width		
	Compactor weight with power unit	11,900 lbs.	12,200 lbs.	
RAM	Ram height	30.50"		
	Ram penetration	15.00"		
	Face plate			
	Base plate			
	Top plate	1/4" formed plate with 3" channels at 12" spacing		
	Side plates	1/4" formed plate		
COMPACTOR HEAD	Floor	1/2" AR plate with 4" channels at 12" spacing		
	Sides	1/4" steel plate sheets with 4" x 3" vertical tube stiffeners, 3" x 2" horizontal stiffeners		
	Breaker bar	8" x 8", 1" angled steel		
	Top deck	11 gauge steel (standard)		
ELECTRICAL	Electric motor	15 hp (ODP)	20 hp (ODP)	30 hp (ODP)
	Voltage	208/230/460, 3 phase 60 Hz		
	Power box	UL rated		
	Automated cycle operation	Turn key switch-ram extends, retracts & stops automatically		
HYDRAULIC PERFORMANCE	Pump	15.0 gpm		
	Pump type			
	Hydraulic oil tank	56 gallon reservoir		
	Cylinder bore/rod/stroke	6.00" bore, 4.50" rod, 120" stroke	7.00" bore, 4.50" rod, 120" stroke	
	Normal ram face pressure	59,300 lbs at 2,100 psi	80,800 lbs at 2,100 psi	
	Maximum ram face pressure	67,800 lbs at 2,400 psi	88,500 lbs at 2,300 psi	
	Normal ram psi	32.40 psi	44.15 psi	
	Maximum ram psi	37.05 psi	48.36 psi	
	Cubic yard per hour	252		
	Power unit location	Remote		
Cycle time	59 seconds			
CONTAINER SPECIFICATIONS	Rated	70,000 lbs.	90,000 lbs.	
	Ratchet binders	1 3/8" ratchet binders with 1" hooks standard	1 3/4" ratchet binders with 2" hooks standard	

EXTREME DUTY MODELS



APC-526

STANDARD FEATURES



Close up view of tongue and groove floor and sidewall

SPECIFICATIONS		APC-426	APC-526
CHARGE BOX	Wastequip rating:	4.00 cubic yards	5.00 cubic yards
	Wastec rating	3.49 cubic yards	4.29 cubic yards
RAM	Clear top opening	83.5" length x 56" width	106" length x 56.125" width
	Compactor weight with power unit	17,466 lbs.	18,855 lbs.s.
COMPACTOR HEAD	Ram height	27"	
	Ram penetration	21"	
	Face plate	3/4" AR plate 42" x 58"	
	Base plate	3/8" AR plate	
	Top plate	3/8" AR A36 plate	
ELECTRICAL	Side plates	3/8" AR A36 plate	
	Floor	3/4" AR plate	
	Sides	3/8" AR plate	
	Breaker bar	6" x 2" x 1/4" doubled with 1" x 6" x 6" angle face	
HYDRAULIC PERFORMANCE	Top deck	3/8" A36 PL	
	Electric motor	20 hp *30 HP option	
	Voltage	208/230/460, 3 phase 60 Hz	
	Power box	UL rated	
	Automated cycle operation	Turn key switch-ram extends, retracts & stops automatically	
	Pump	29 gpm	
	Pump type	Double vane	
	Hydraulic oil tank	64 gallon reservoir	
	Cylinder bore/rod/stroke	6.00" bore, 4.50" rod, 116" stroke	6.00" bore, 4.50" rod, 136" stroke
	Normal ram face pressure	127,200 lbs at 2,250 psi	127,200 lbs at 2,250 psi
Maximum ram face pressure	141,400 lbs at 2,500 psi	141,400 lbs at 2,500 psi	
CONTAINER SPECIFICATIONS	Normal ram psi	79.8 psi	79.8 psi
	Maximum ram psi	88.7 psi	88.7 psi
	Cubic yard per hour	116	161
	Power unit location	Remote	
	Cycle time	99 seconds	114 seconds
	Rated	90,000 lbs	90,000 lbs
	Ratchet binders	1 3/4" ratchet binders with 2" hooks standard	

AR (abrasion-resistant) tongue and groove floor:

Limits destroyed material from becoming trapped between the ram and the floor

AR (abrasion-resistant) tongue and groove side walls:

Limits destroyed material from becoming trapped between the ram and side walls

Fully automatic cycling:

- » Simply turn the key to the crush mode position for fully automatic cycling, to provide easier and more efficient operation
- » Advanced PLC (Programmable Logic Controller) can be set to crush against the blade multiple times, if needed

Full light:

Alerts operator when the container is full

Side access panels:

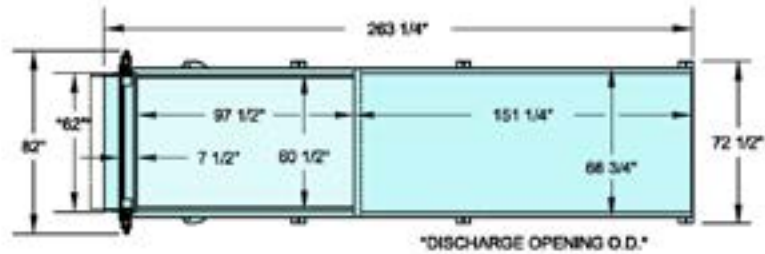
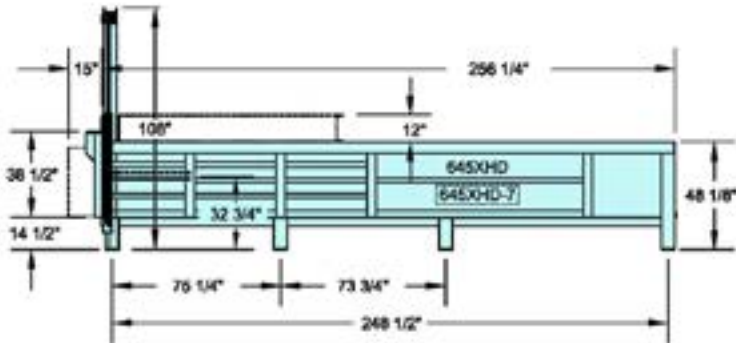
Easily removable for preventative maintenance and servicing

NEMA 4 rated control panel:

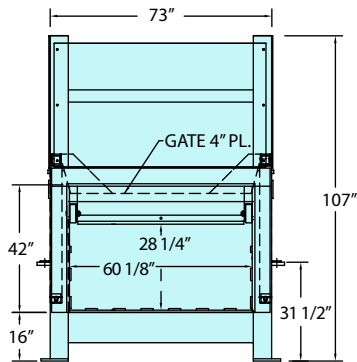
Provides additional protection against splashing water, hose directed water and dust

PRE-CRUSHER DIMENSIONS

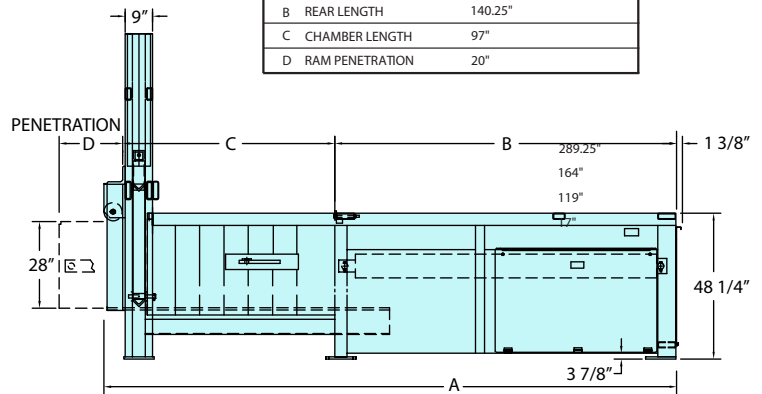
645 MODELS



APC MODELS



PRECRUSHER MODEL	APC 426
A OVERALL LENGTH	242.75"
B REAR LENGTH	140.25"
C CHAMBER LENGTH	97"
D RAM PENETRATION	20"



Standard Color Choices*



* Colors shown are as accurate as printing allows. The actual color is subject to variation from the printed color sample. Color choices vary by plant location. Please contact your local sales representative for available colors. Custom colors are available upon request and are subject to an additional charge.



Replacement parts available online at www.wastebuilt.com

Wastequip reserves the right to make changes to designs, specifications, and components at any time without notice. Information contained within this literature is intended to be the most accurate available at time of printing. For our terms and conditions of sale, including our limited warranty, please visit www.wastequip.com.